

# Emergency incidents (Code 1) meeting targets by station maintenance area (MA).

from 1 April 2018 to 30 June 2018 (includes where MFB arrived first on-scene)



This measure applies a target of 7.7 minutes for all Code 1 incidents, with the exception of emergency medical response incidents (EMR). The service delivery standard (response time) for EMR is 9.2 minutes.

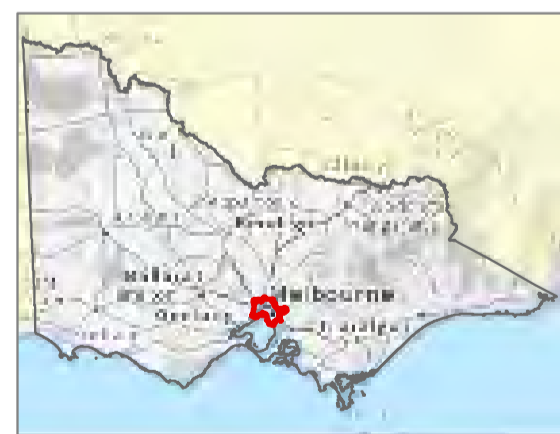
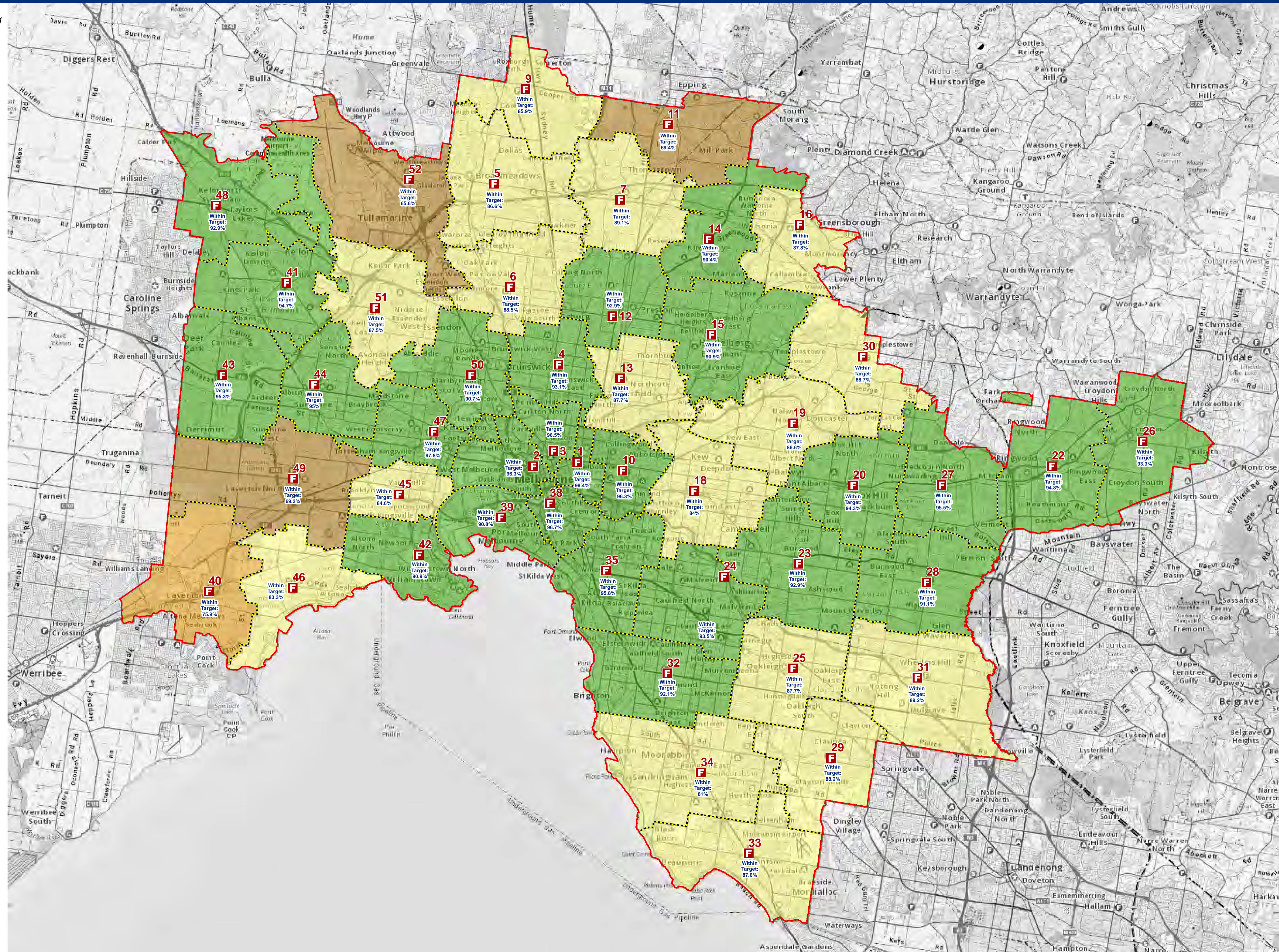
Calls under Normal Road Conditions and outside the Metropolitan District have been excluded.

- MFB Fire Stations
- Operational Boundary
- Maintenance Area

## Within Target

### Percentage

- 60 - 70 %
- 70 - 80 %
- 80 - 90 %
- 90 - 100 %



1:90,000

(c) State Government of Victoria 2018  
 This map is a snapshot generated from Victorian Government data as well as data from various other sources. This does not guarantee that the publication is without flaw of any kind or is wholly appropriate for your particular purposes and therefore disclaims all liability for error, loss or damage which may arise from reliance upon it. All persons accessing this information should make appropriate enquiries to assess the currency of the data.

Copyright Notice:  
 Published edition, original works and this compilation  
 (c) Spatial Vision Innovations Pty Ltd, Australia 2018.